

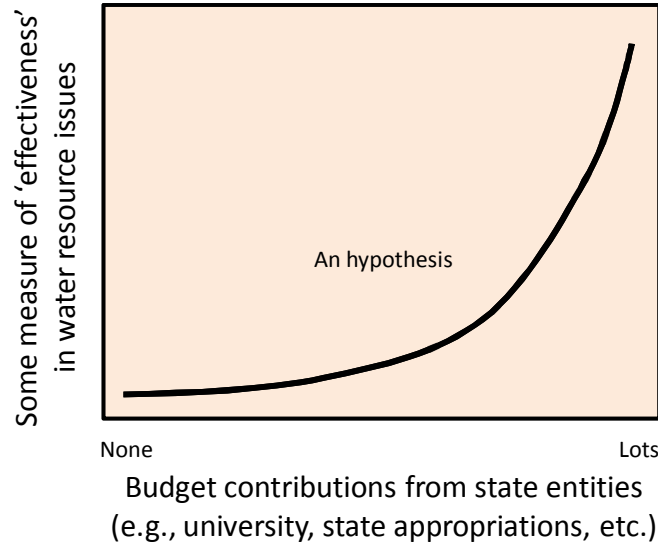
NIWR Survey

Wyatt F. Cross and Stephanie McGinnis
Montana Water Center
Montana State University, Bozeman



**Context. . or. . why are
we doing this?**

Making our case for additional state-level contributions



The 'Water Resources Research Act' (1964)

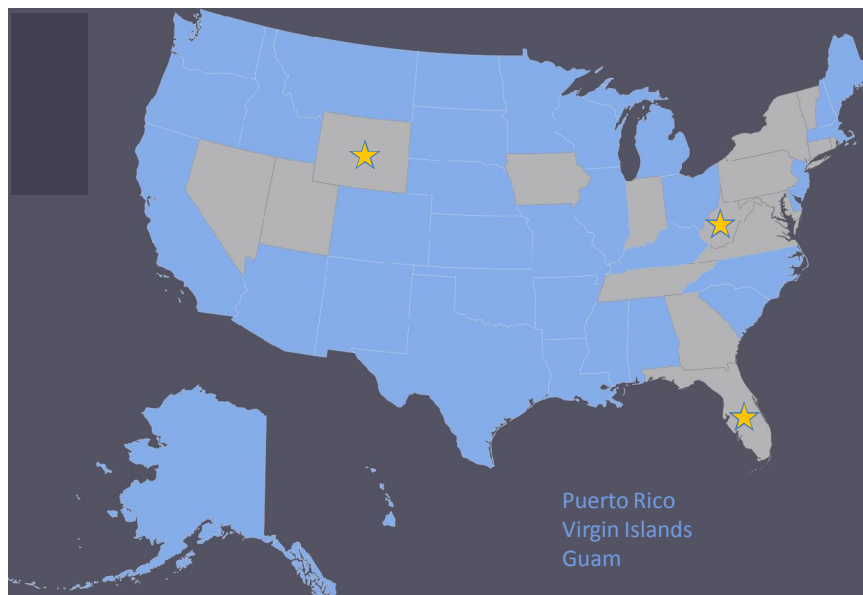


- 50 years later – are the centers being leveraged as intended? – i.e., are the “impacts of federal dollars being maximized?”

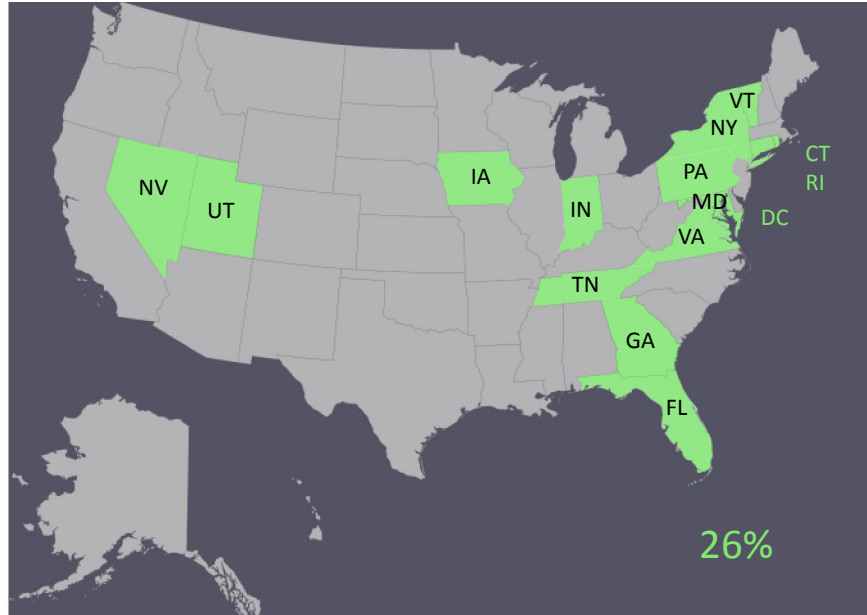
Goals for Today

- Provide an summary of variation in budgets, staff, etc. across the WRRIs
- Generate discussion about why this variation exists and how we might leverage this survey for additional support
- Discuss possibility of publishing a commentary that reflects on our 50 years and strategically demonstrates our need for:
 - additional base support from federal govt.
 - additional 'buy-in' from our universities and states

Completed Survey



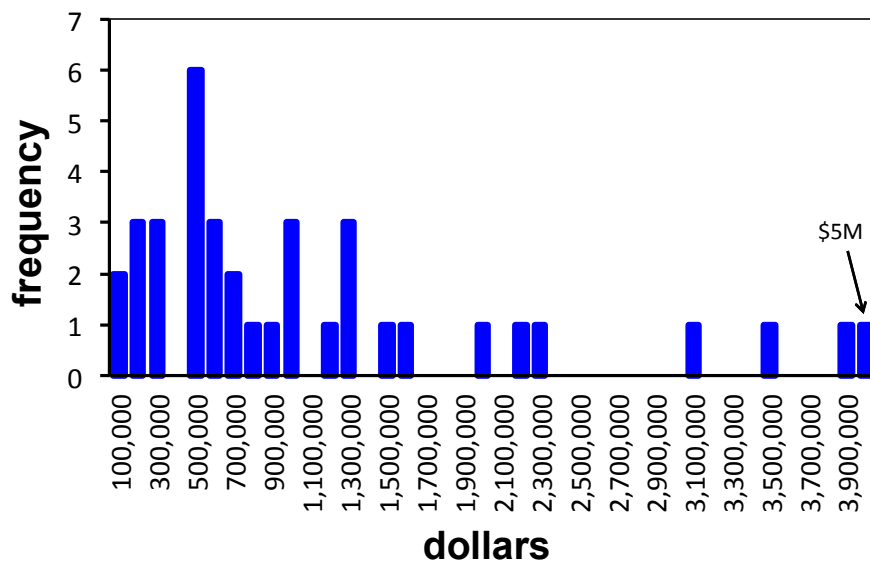
About to complete survey 😊?



RESULTS

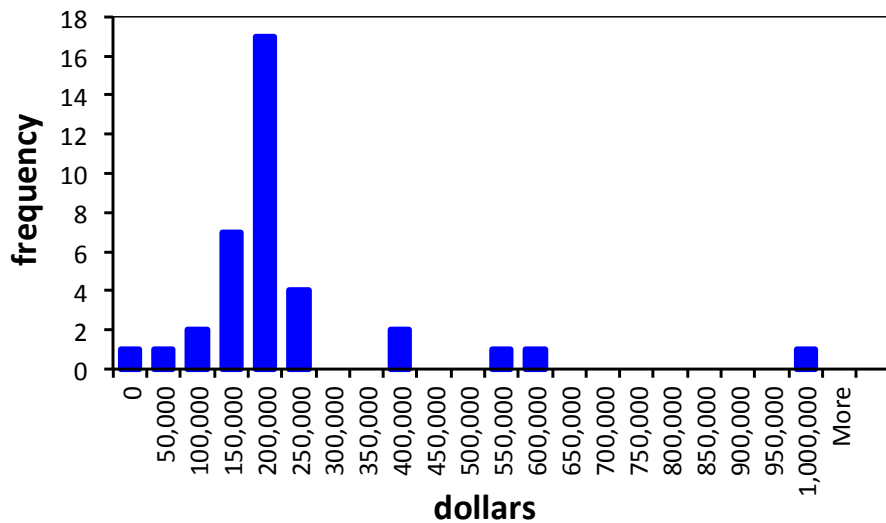
What is your center's average annual budget over the past 3 years?

Please include all sources of funding (e.g., USGS 104b, USGS 104g, state funding, university funding, other external grants, donations, funds received for analyses, trainings, pass-through funds, etc.)



What is your center's average annual total matching funds over the past 3 years?

Please include your 104b match as well as any other matching funds for your Center including in-kind support.

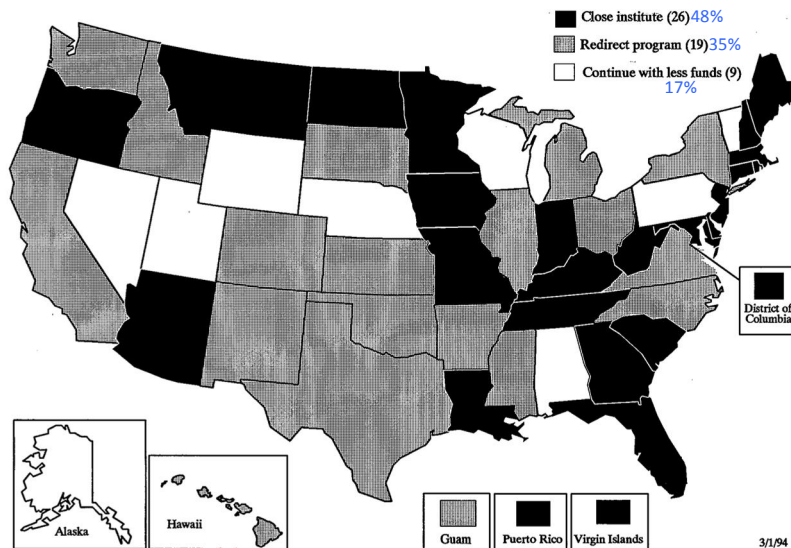


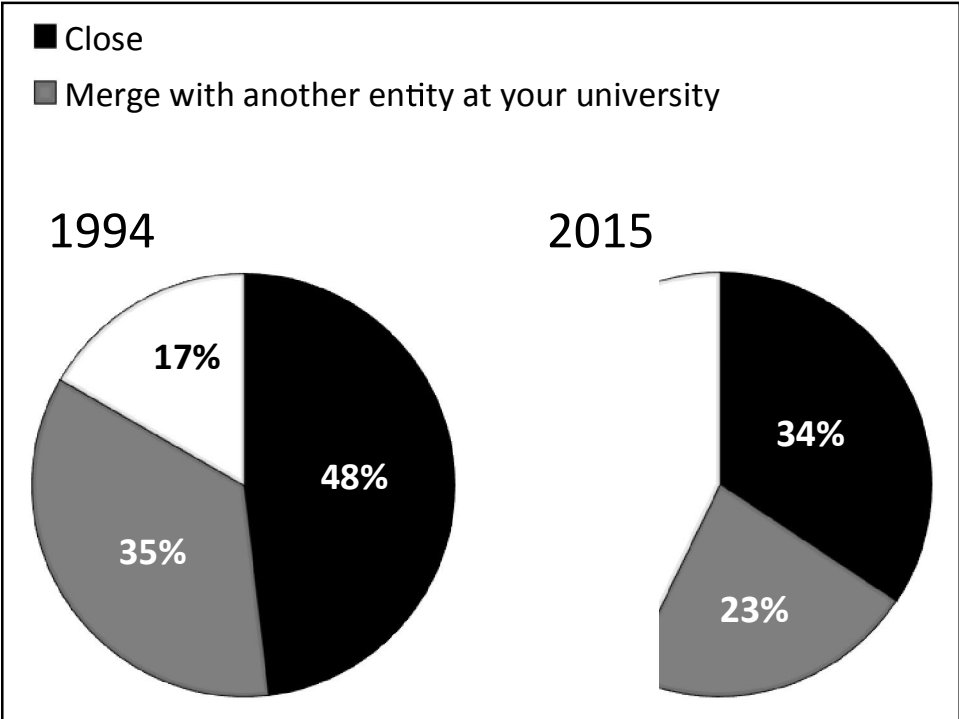
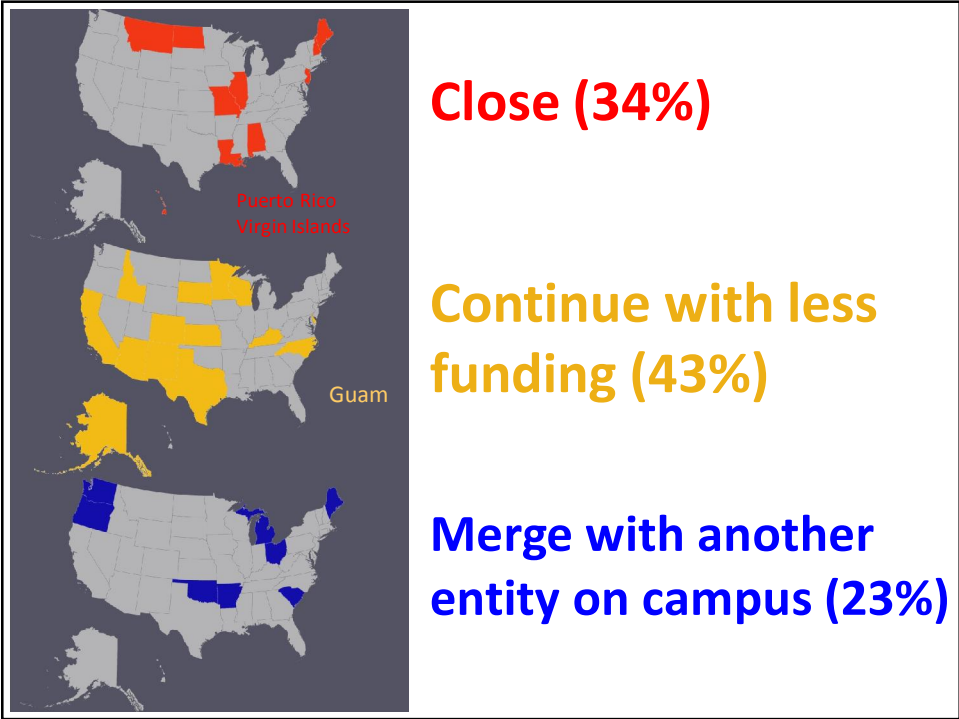
If you no longer received 104b funding, your center would most likely. . .

- Close
- Merge with another entity at your university
- Continue with less funding

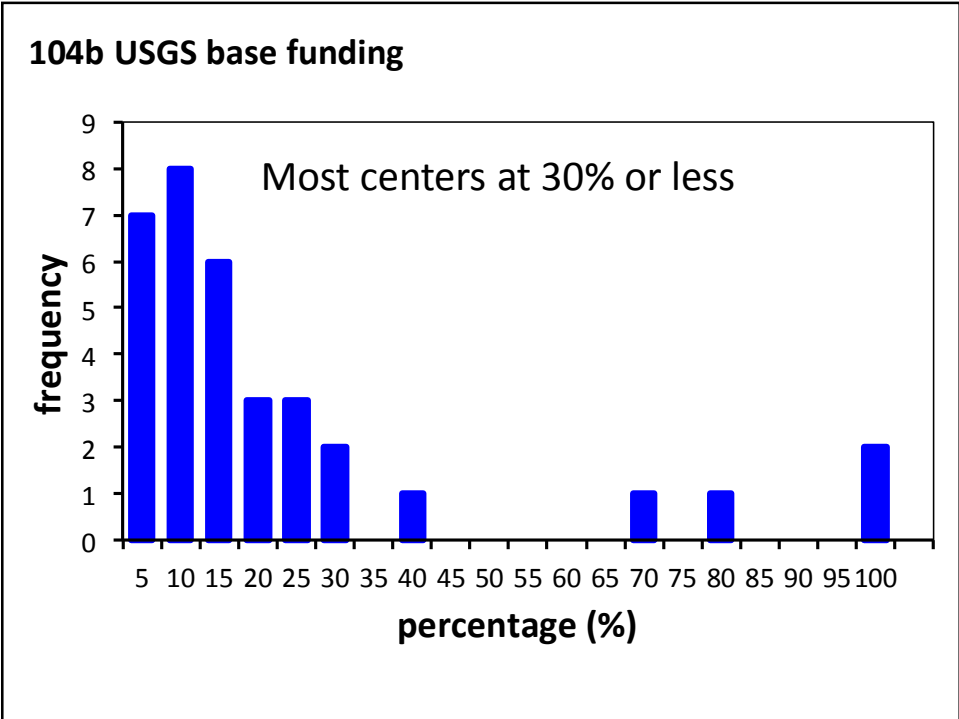
1994 survey

Impact of Eliminating the Federally Funded Water Resources Research Institutes



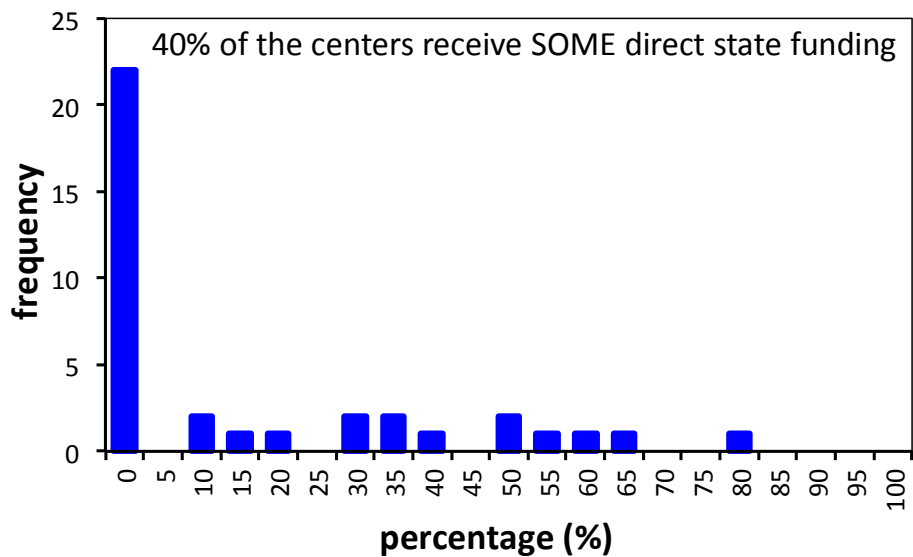


What percentage of your annual budget comes from 104b USGS base funding?

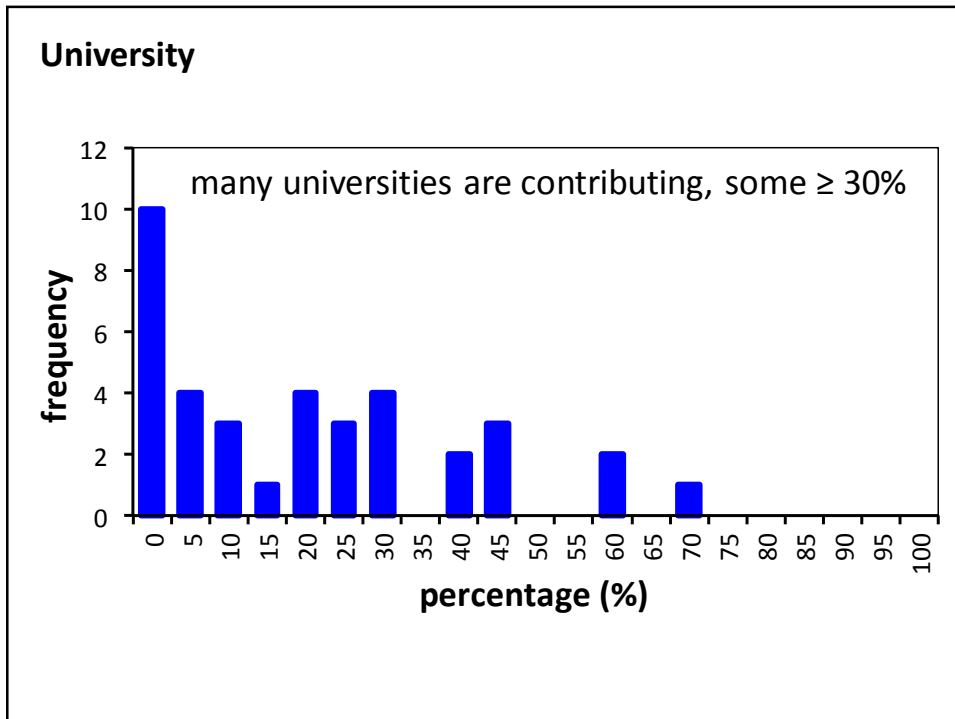


What percentage of your annual budget comes directly from the state legislature to your institute?

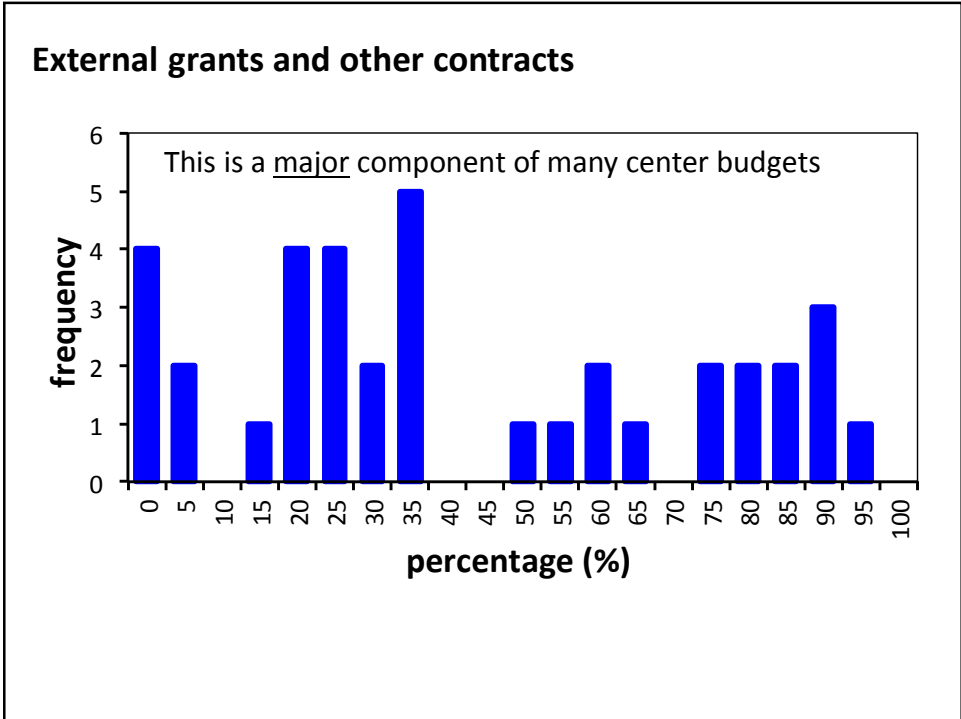
State legislature



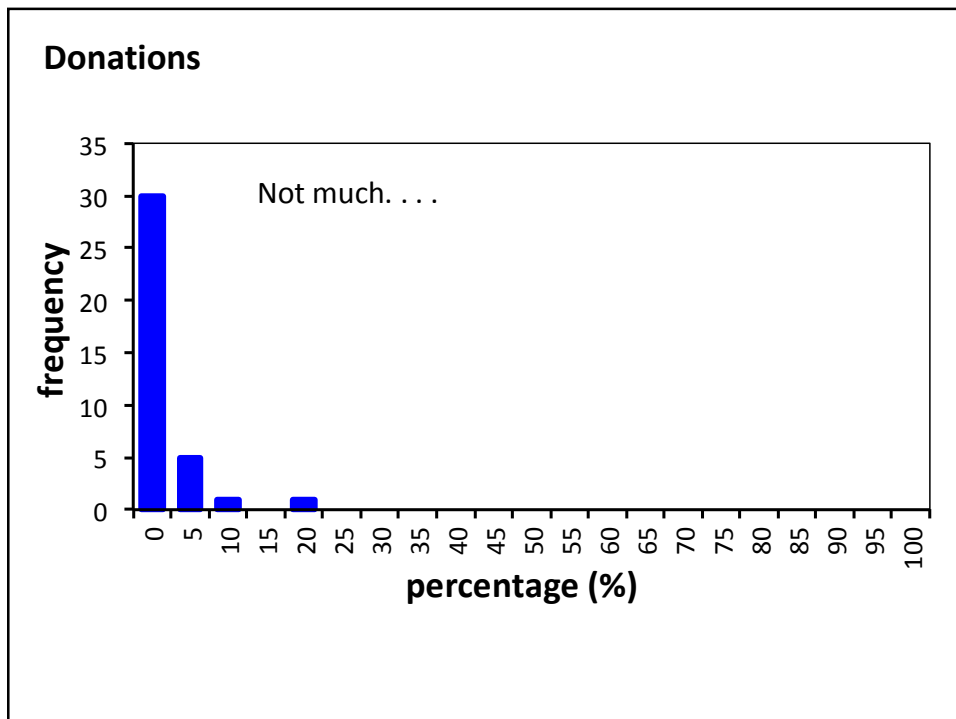
What percentage of your annual budget comes from university funds?



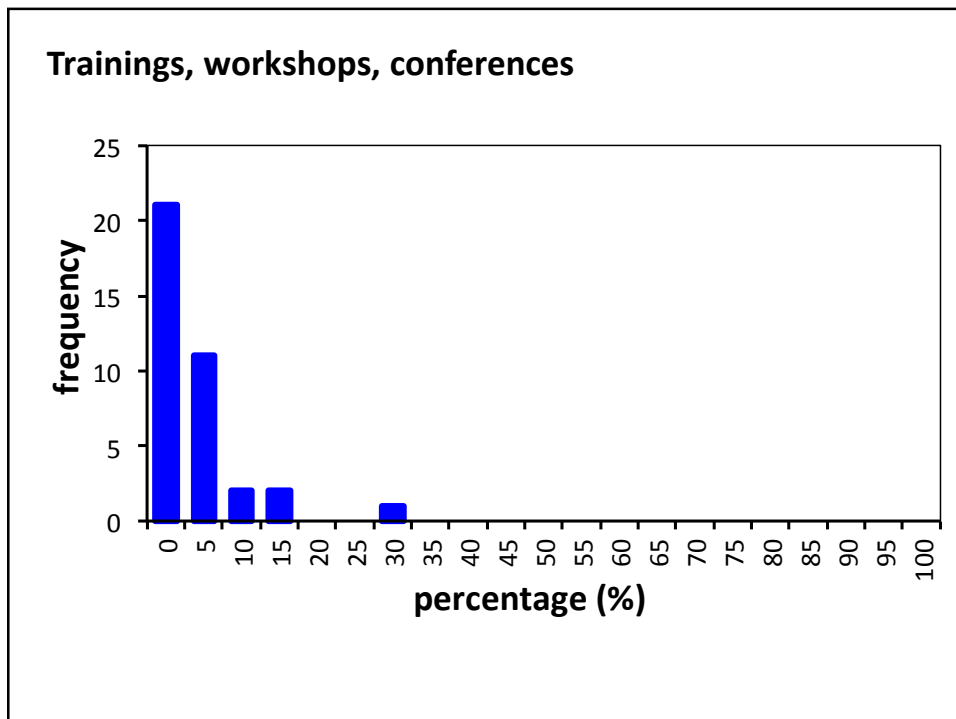
What percentage of your annual budget comes from external grants and other contracts, including those from foundations?



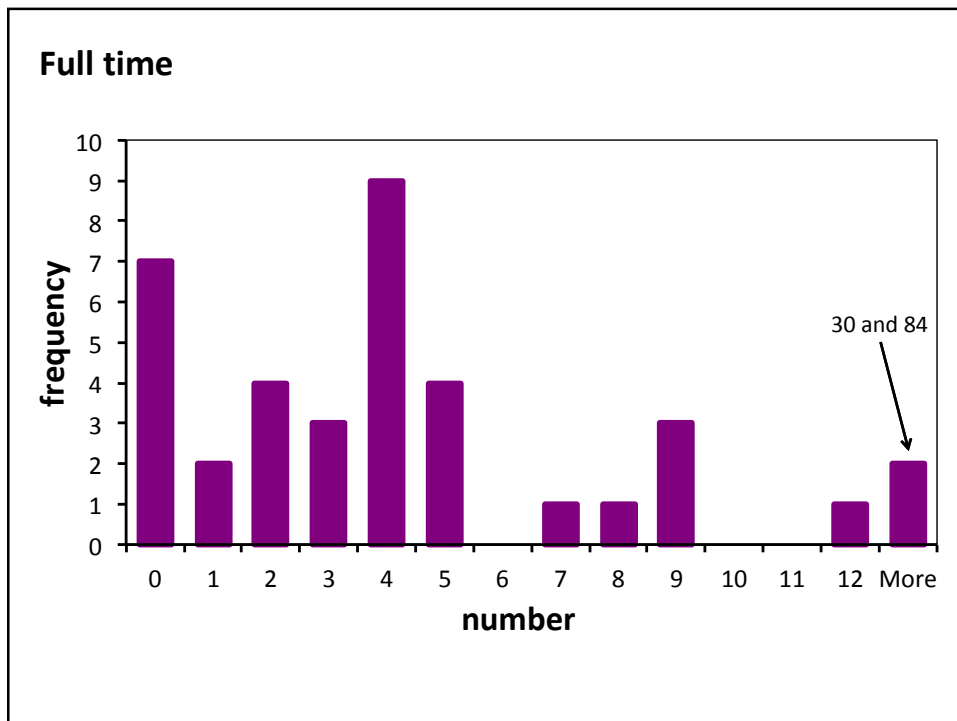
**What percentage of your
annual budget comes from
donations?**



What percentage of your annual budget comes from trainings, workshops, conferences or other services provided by your center?

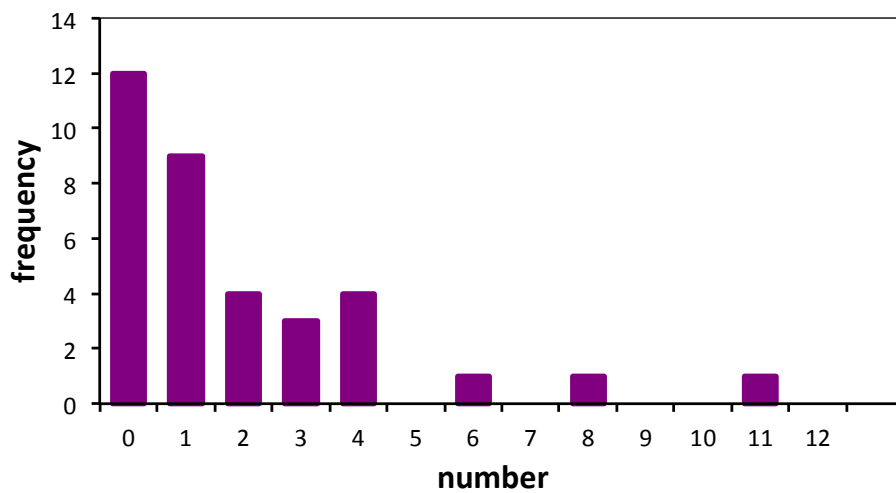


Number of full-time staff



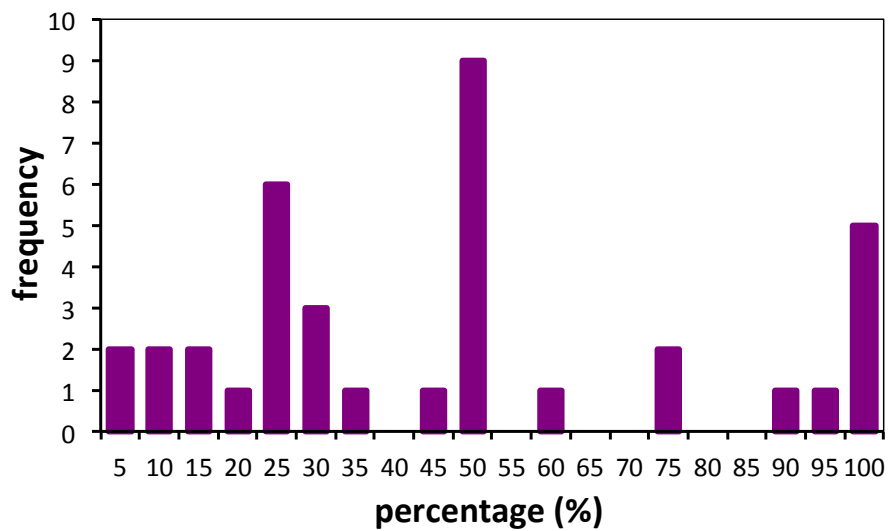
Number of part-time staff

Part time



% of your time dedicated as director

Director's FTE

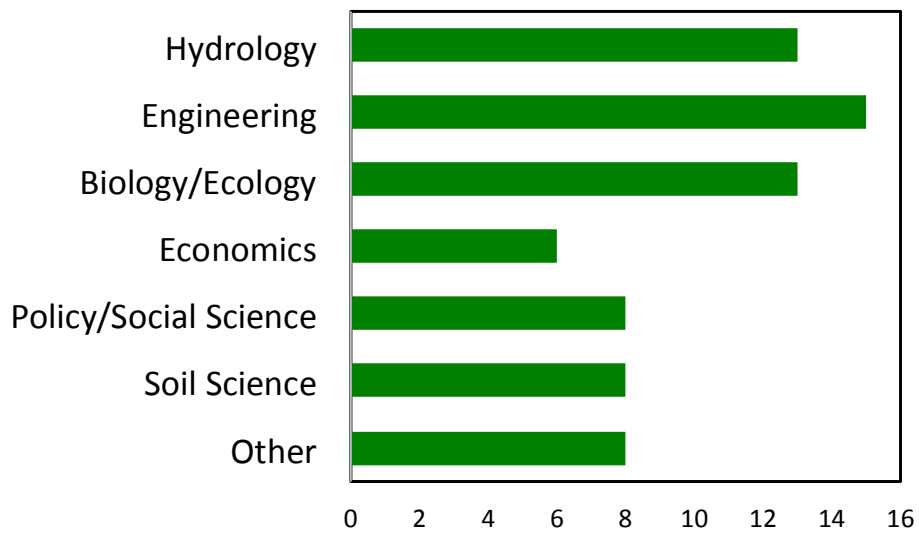


**Where is your center
positioned within the
university?**

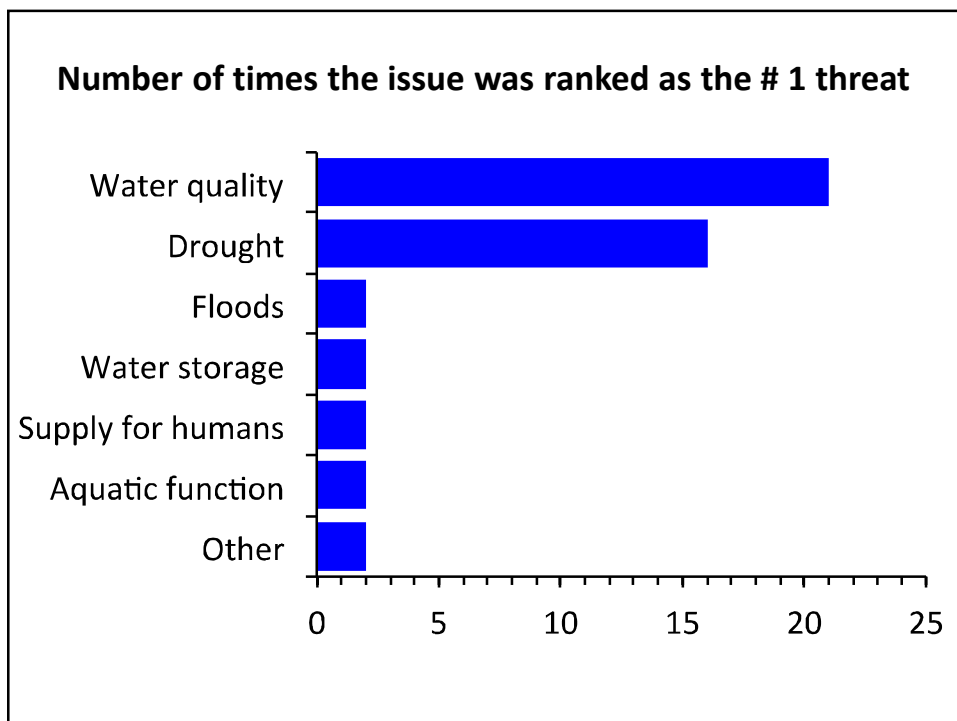
**The most common responses
(this was difficult. . .)**

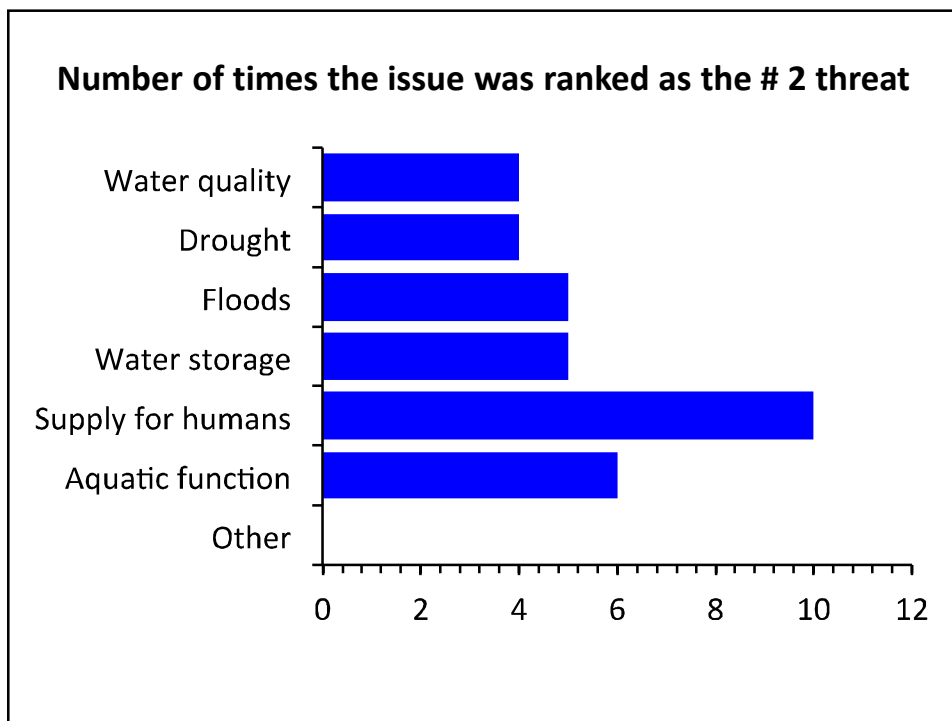
- Vice Pres. or Vice Chancellor for Research (10)
- Within a college - mostly College of Ag (9)
- Division and/or department level (6)
- University Extension (4)
- Ag Experiment Station (3)

Area of expertise



Greatest threats to water resources in your state





Responses for 'other'

- Aquatic invasive species
- Climate change
- Water treatment and water distribution
- Surface water – groundwater interaction
- Coastal issues (e.g., flooding, erosion, nat. hazards, etc.)
- Water quantity - long term (not just drought)
- Education
- Watershed management & modeling
- Waste water operation
- Hydro-geology, contaminants

The following USGS Water Science goals were outlined in a strategic direction report for 2012-2022. Please rank them in order of importance (1 most important; 5 least important) as they align to your Center's research and education outreach goals.

Goal 1: Provide society the information it needs regarding the amount and quality of water in all components of the water cycle at high temporal and spatial resolution, nationwide.

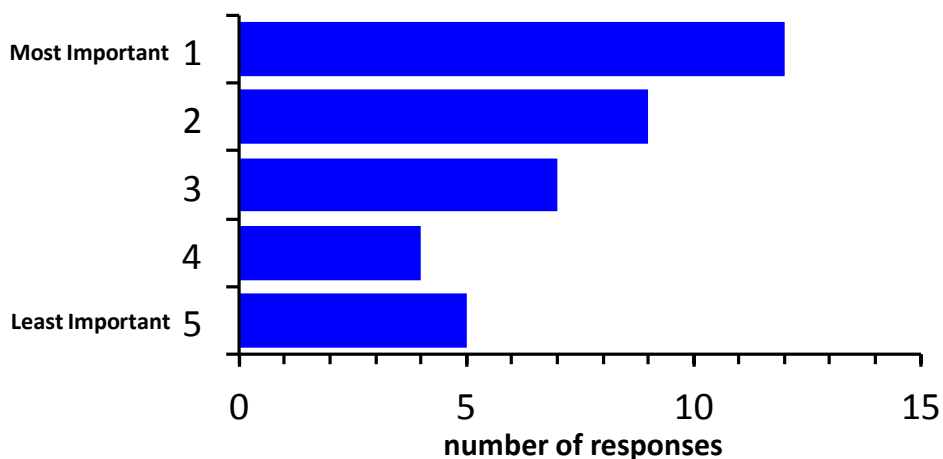
Goal 2. Advance understanding of processes that determine water availability.

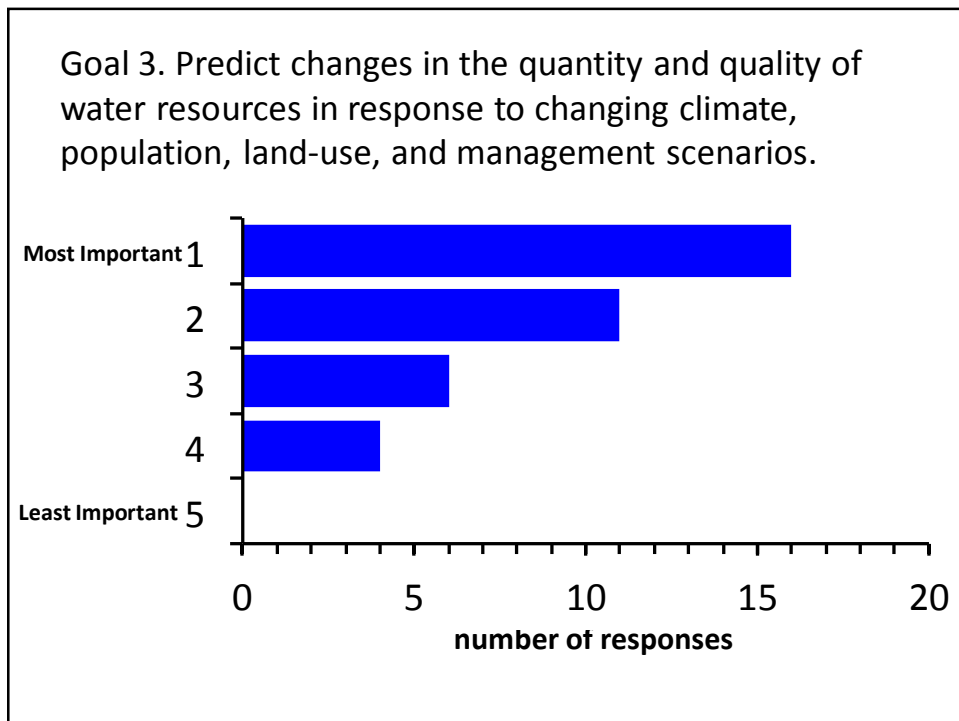
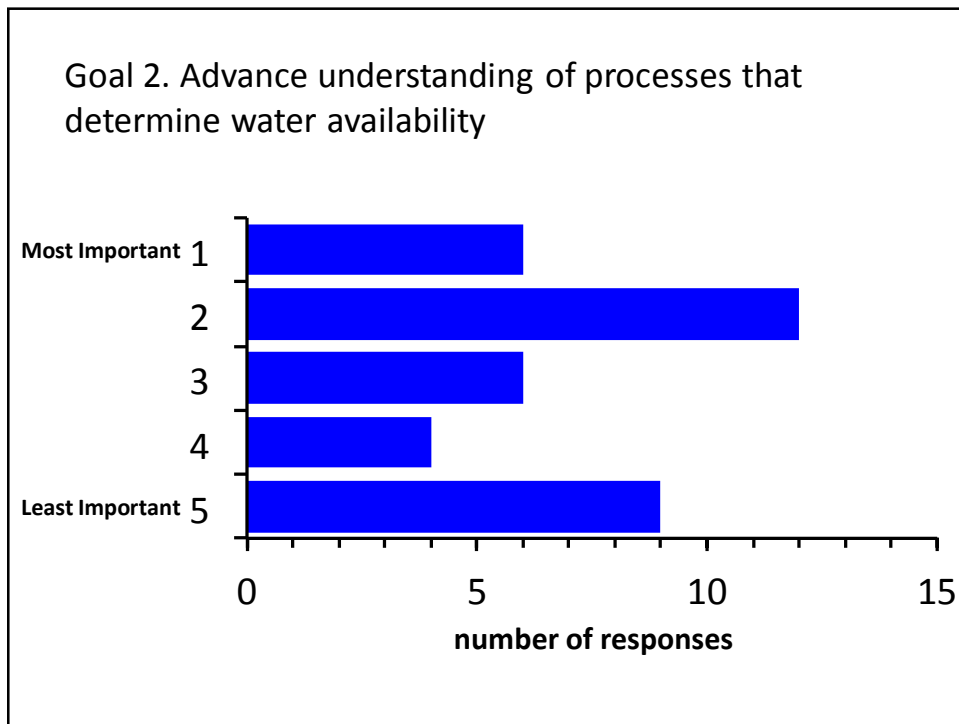
Goal 3. Predict changes in the quantity and quality of water resources in response to changing climate, population, land-use, and management scenarios.

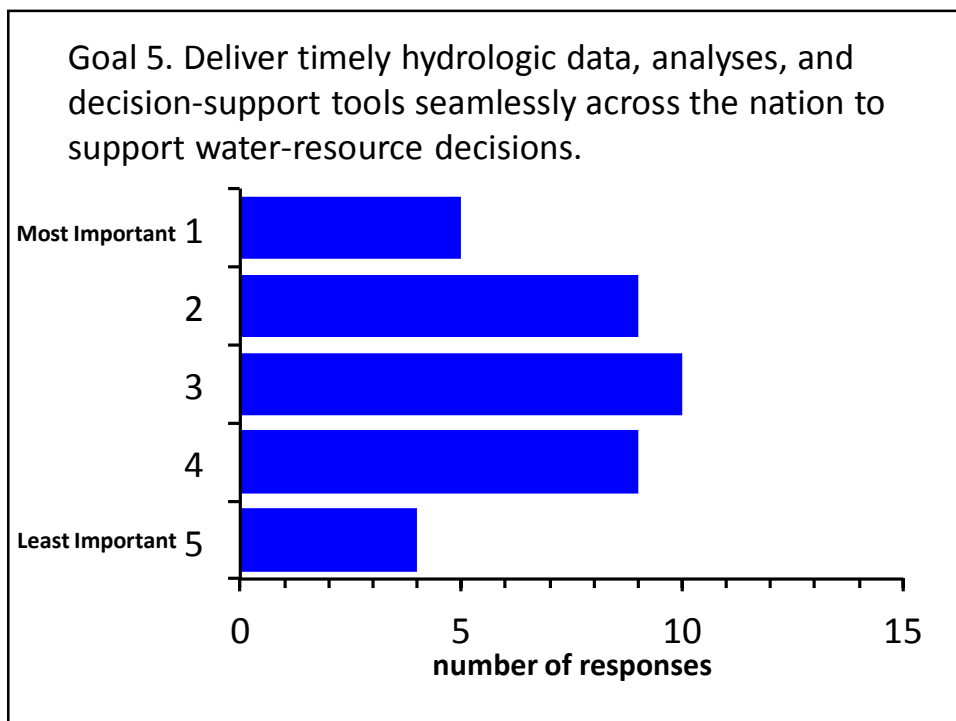
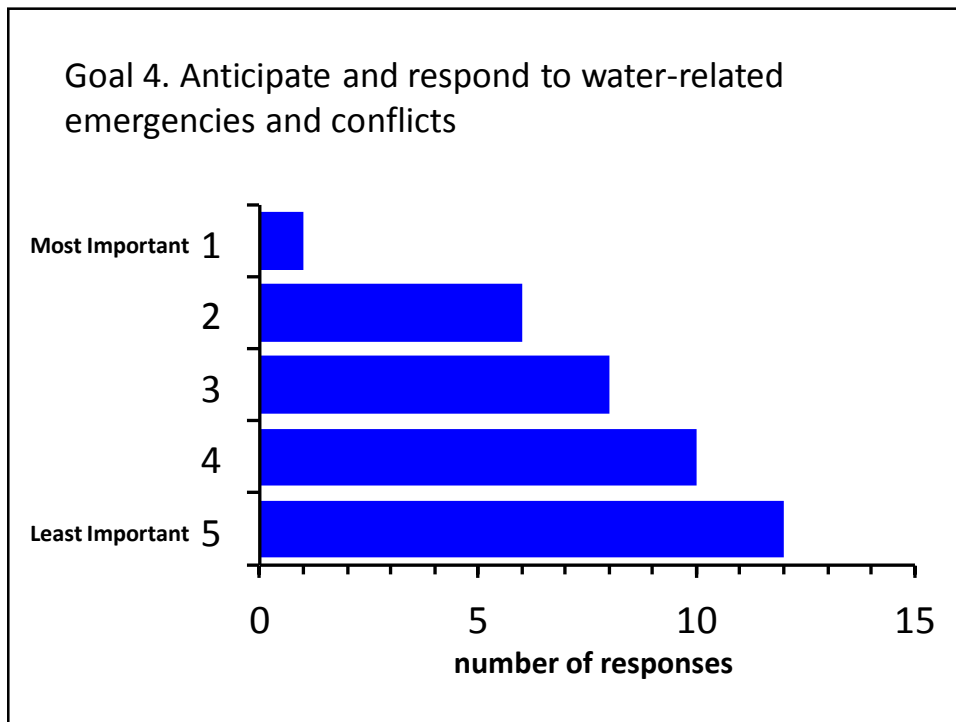
Goal 4. Anticipate and respond to water-related emergencies and conflicts.

Goal 5. Deliver timely hydrologic data, analyses, and decision-support tools seamlessly across the Nation to support water-resource decisions.

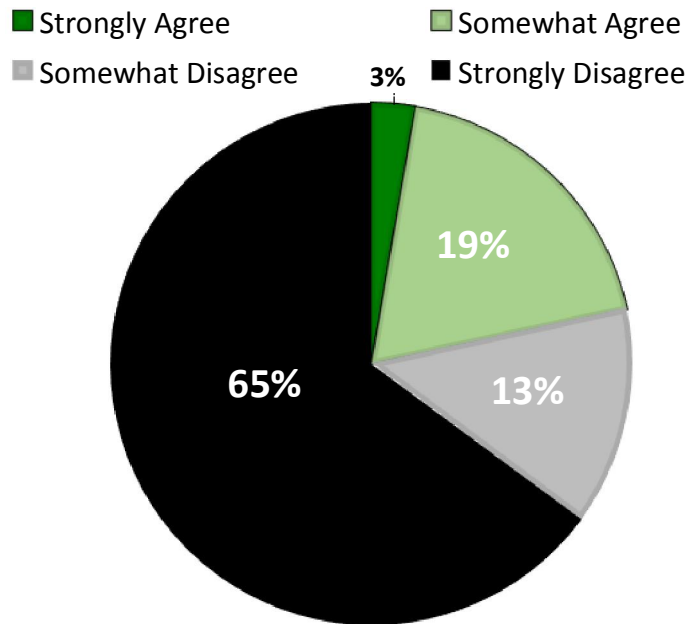
Goal 1: Provide society the information it needs regarding the amount and quality of water in all components of the water cycle at high temporal and spatial resolution, nationwide



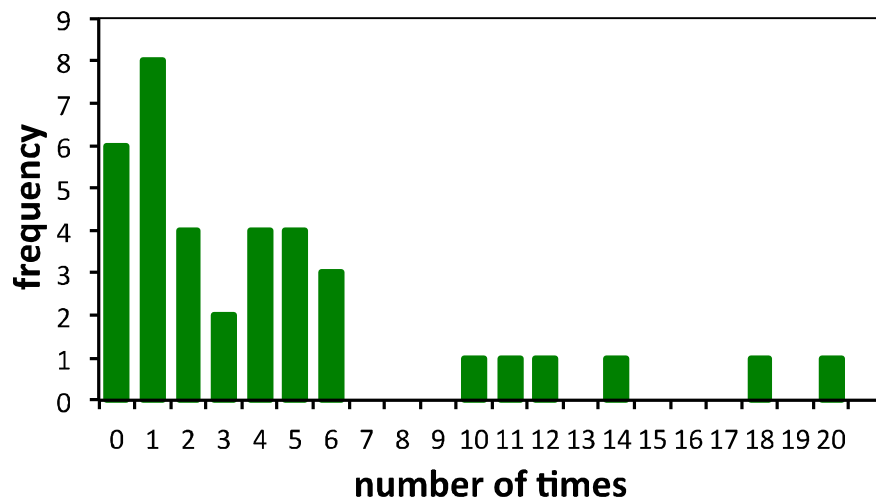




Does your current level of funding allow you to keep pace with water resource issues in your state?

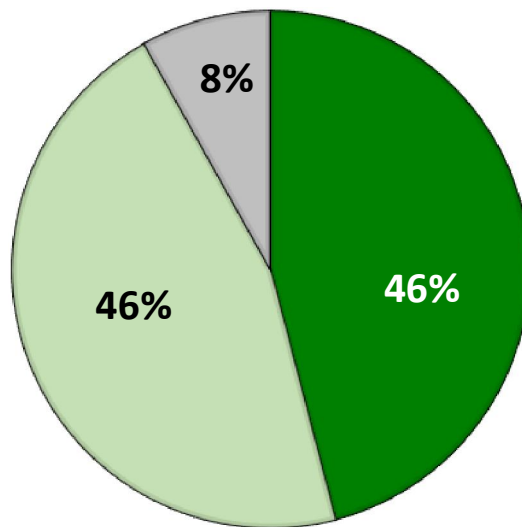


How many times per year do you interact with your state legislators?

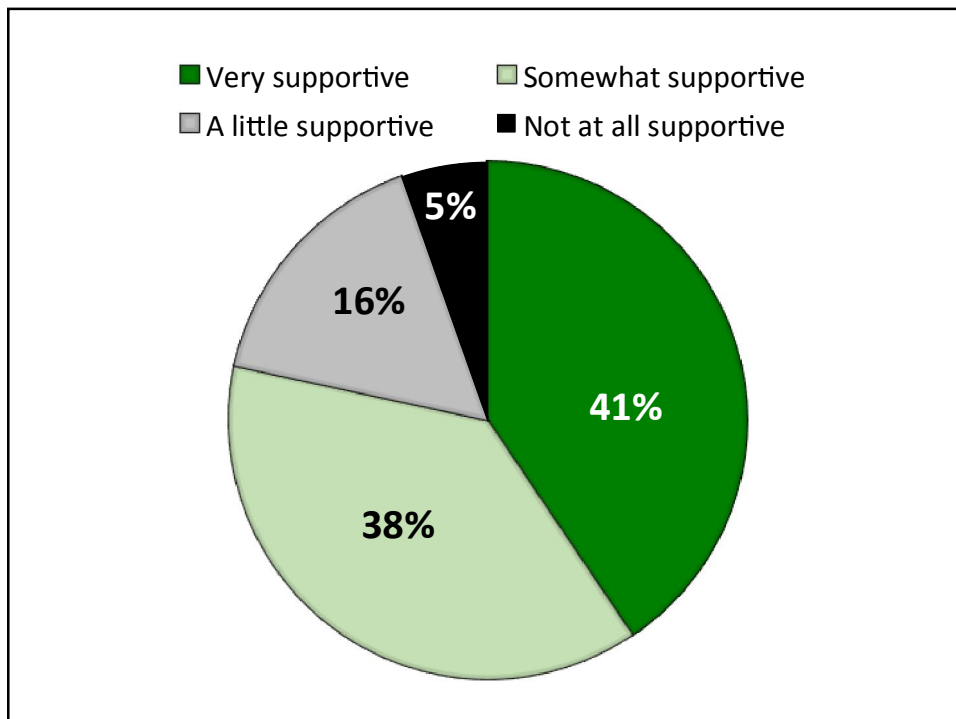


How receptive are they to meeting and discussing water issues?

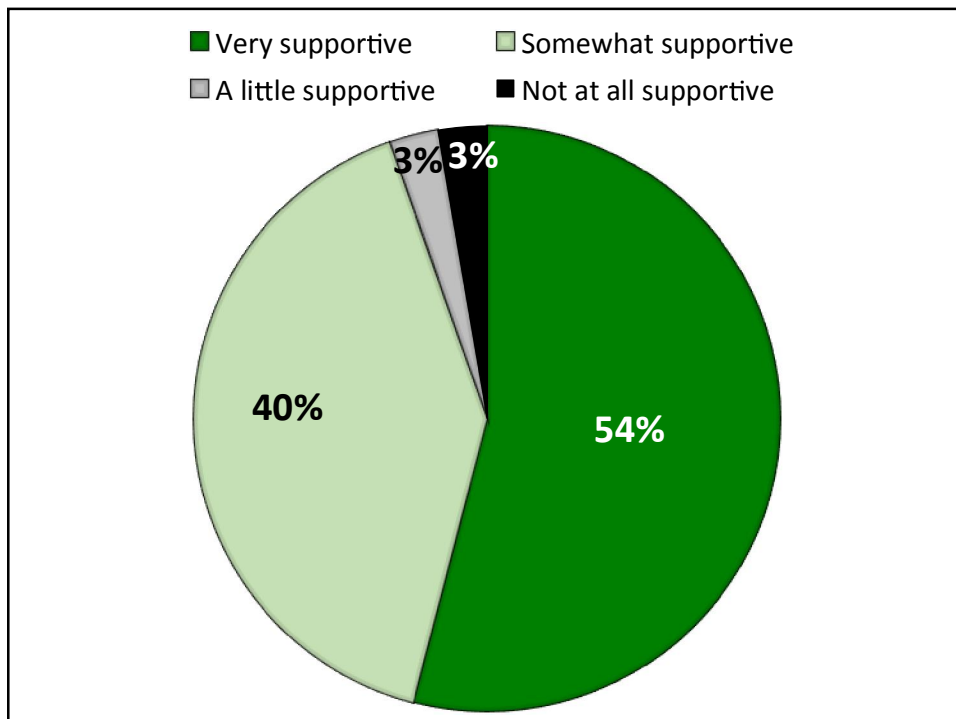
■ Very receptive ■ Somewhat receptive
■ A little receptive ■ Not at all receptive



**How would you characterize
state legislative support
(other than financial) of your
center's goals?**



How would you characterize congressional delegate support (other than financial) of your center's goals?



Goals for Today

- Provide an summary of variation in budgets, staff, etc. across the WRRIs
- Generate discussion about why this variation exists and how we might leverage this survey for additional support
- Discuss possibility of publishing a commentary that reflects on our 50 years and strategically demonstrates our need for:
 - additional base support from federal govt.
 - additional 'buy-in' from our universities and states